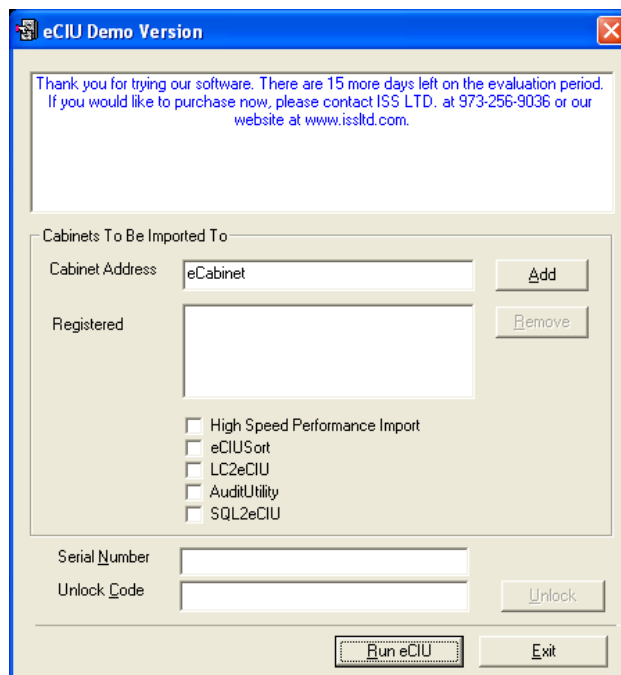


**THE  Cabinet. CONNECTOR**  
**FOR**  
** eCopy ShareScan OP**

**I**NNOVATIVE  
**SS**YSTEMS &  
**S**OLUTIONS, LTD.  
[WWW.ISSLTD.COM](http://WWW.ISSLTD.COM)

## GETTING STARTED

After the install is complete, eCIU will run. eCIU is the “back-end” engine that runs behind the scenes for the eCabinet Connector for eCopy Sharescan OP.



Type the IP Address or  
Hostname of your eCabinet.

Type the Serial Number  
provided by your reseller.

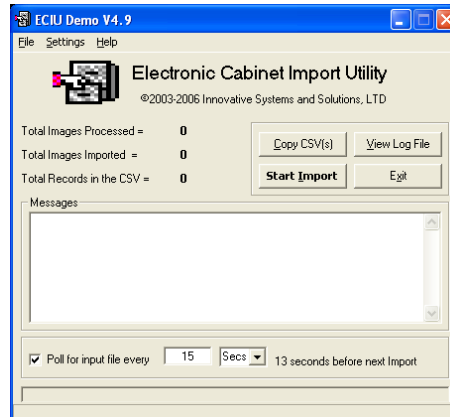
After purchasing, enter the  
unlock code provided by your  
reseller.



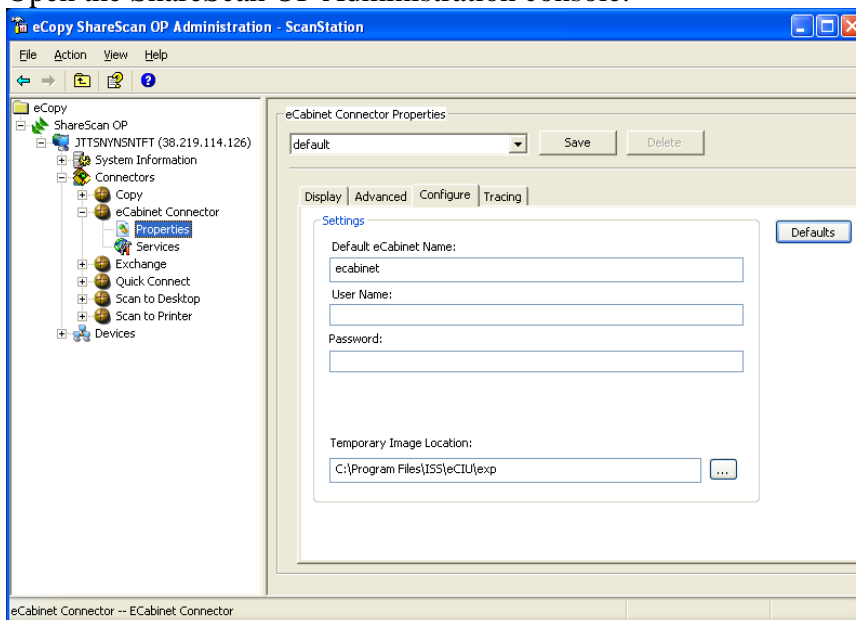
It is important you refer to the eCabinet the same way when registering eCIU, and during ShareScan OP configuration. For Example, if your eCabinet address configured for eCIU is “eCabinet” then you cannot configure ShareScan by its IP Address.

The software installs as a trial version that will expire in 15 days. When using the program in the trial version, neither the serial number or unlock code is needed.

eCIU will not need any further configuration. It automatically placed a shortcut in the ...\\Start Menu\\Programs\\Startup. eCIU by default runs minimized in the system tray.



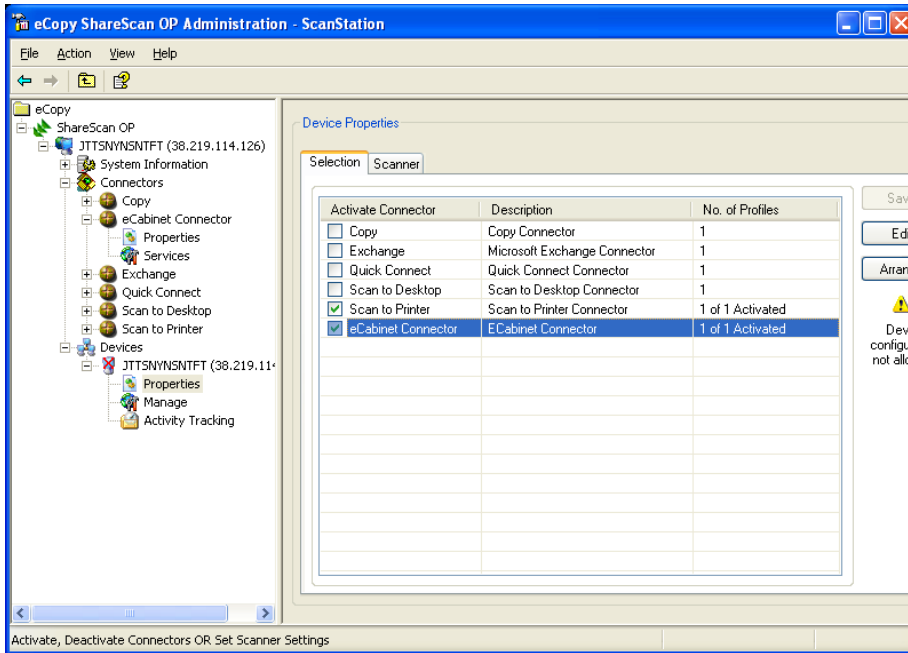
Open the ShareScan OP Administration console.



Make sure the eCabinet Name is entered the same way eCIU was registered. Either by IP address, or DNS Hostname.

By default the temporary Image Location is \\%Program Files%\\ISS\\eCIU\\exp  
It is important this setting stays the same between eCopy and eCIU.

After the connector is configured, it has to be enabled for the specific eCopy device.



Start the ShareScan client, the eCabinet Connector for eCopy ShareScan OP is ready.